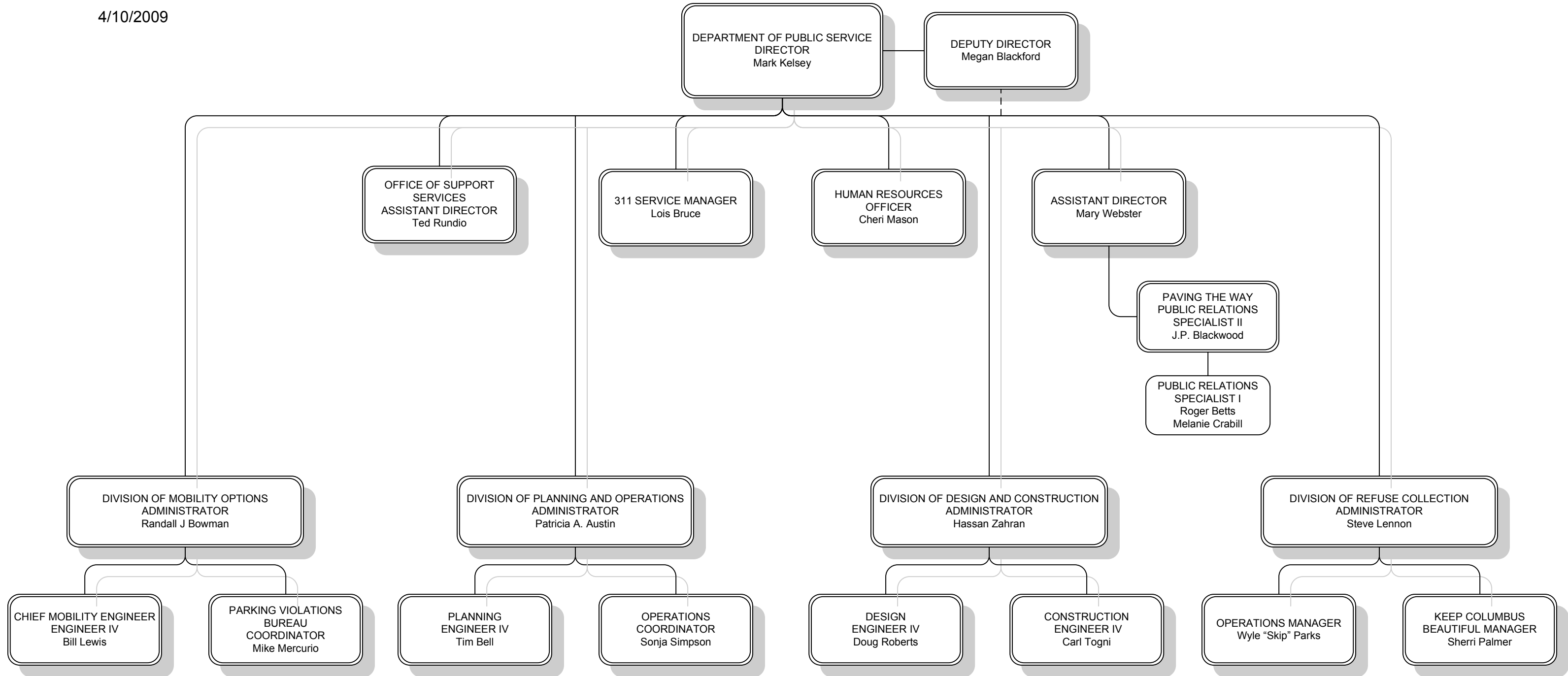


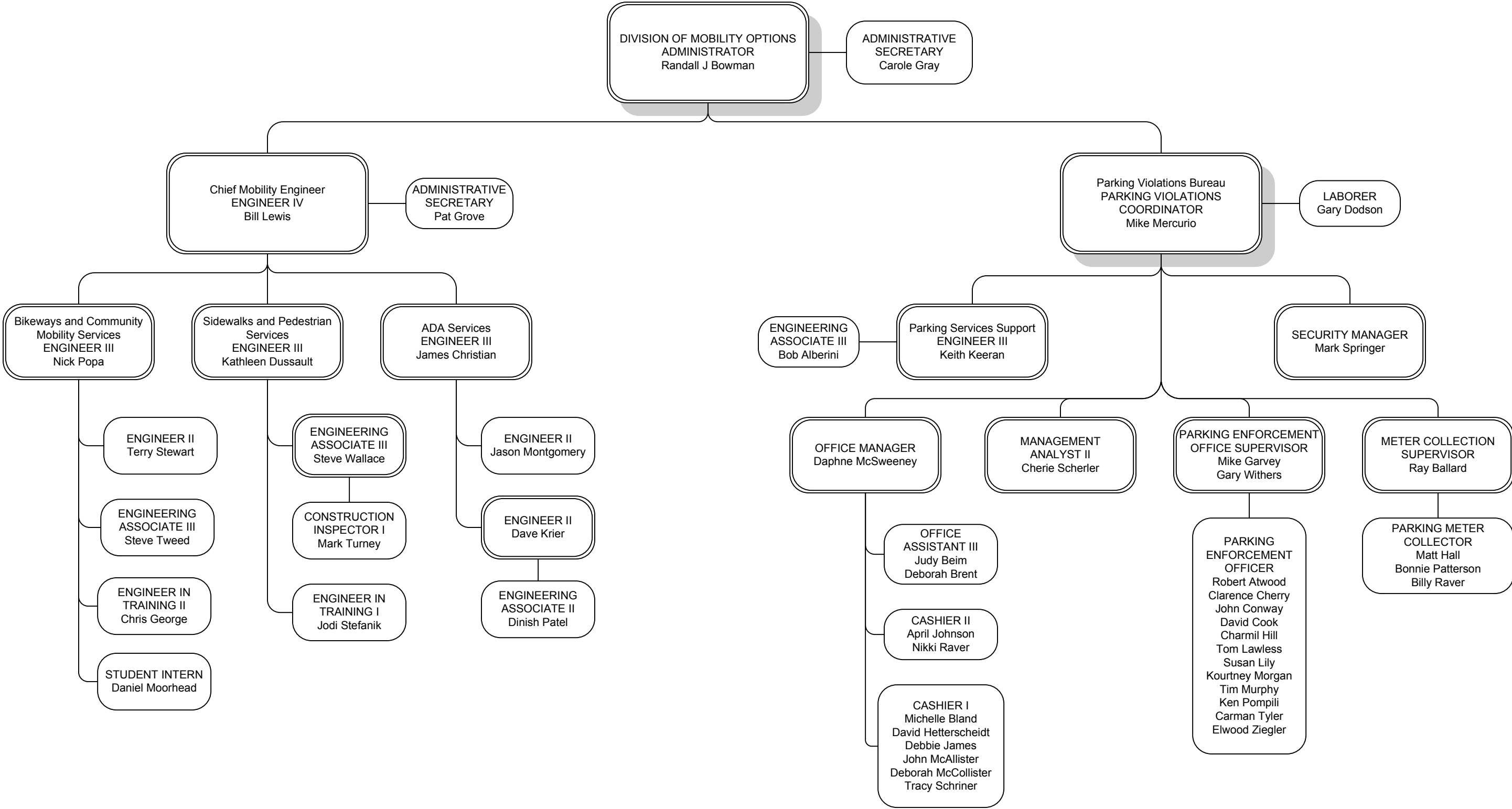
Department of Public Service

4/10/2009



Division of Mobility Options

4/10/2009



Division of Planning and Operations

Planning Section

4/10/2009

Will be part of the Division of Mobility Options when Authorized Strength updated

PUBLIC RELATIONS SPECIALIST I
Steve Cordetti

DIVISION OF PLANNING AND OPERATIONS
ADMINISTRATOR
Patricia A. Austin

ADMINISTRATIVE SECRETARY
Kelly Cramer

PLANNING SECTION
ENGINEER IV
Timothy Bell

ENGINEER I
Jessica Green

ROADWAY DRAINAGE
ENGINEER III
Scott Kraner

BRIDGES / PAVEMENT
ENGINEER III
Dave Mackey

CIP / SCOPING / LONG
TERM PLANNING / ZONING
ENGINEER III
Gary Wilfong

TRAFFIC SAFETY
ENGINEER III
Len Kutney

MAP ROOM / PERMITS
SURVEYOR
Phil Shih

ENGINEERING ASSOCIATE II
Tim Lawrence

ENGINEER II
Alan Moran

ENGINEER IN TRAINING II
Ray Brushart

ENGINEER IN TRAINING I
Daniel Blechschmidt

ENGINEERING ASSOCIATE III
Rock McCoy

ENGINEERING ASSOCIATE II
Cathy Coblenz

ENGINEERING ASSOCIATE I
Phyllis Harrington
Kaleab Kassahun

STUDENT INTERN
Brian McDaniel

ENGINEERING ASSOCIATE I
Tami Peters

ENGINEERING ASSOCIATE III
Ric Rossetti

OFFICE ASSISTANT II
Bonnie Taylor

ENGINEERING ASSOCIATE II
Brad Whitt

CONSTRUCTION INSPECTOR I
Dwayne Byrum
Dave Rangeler
Dave Stroud
Larry Zealler

GIS ANALYST
Al Carmon

GIS TECHNICIAN
James Reagan

ENGINEERING ASSOCIATE I
Aduagna Woldemariam

DRAFTER CAD OPERATOR
Joe McCann

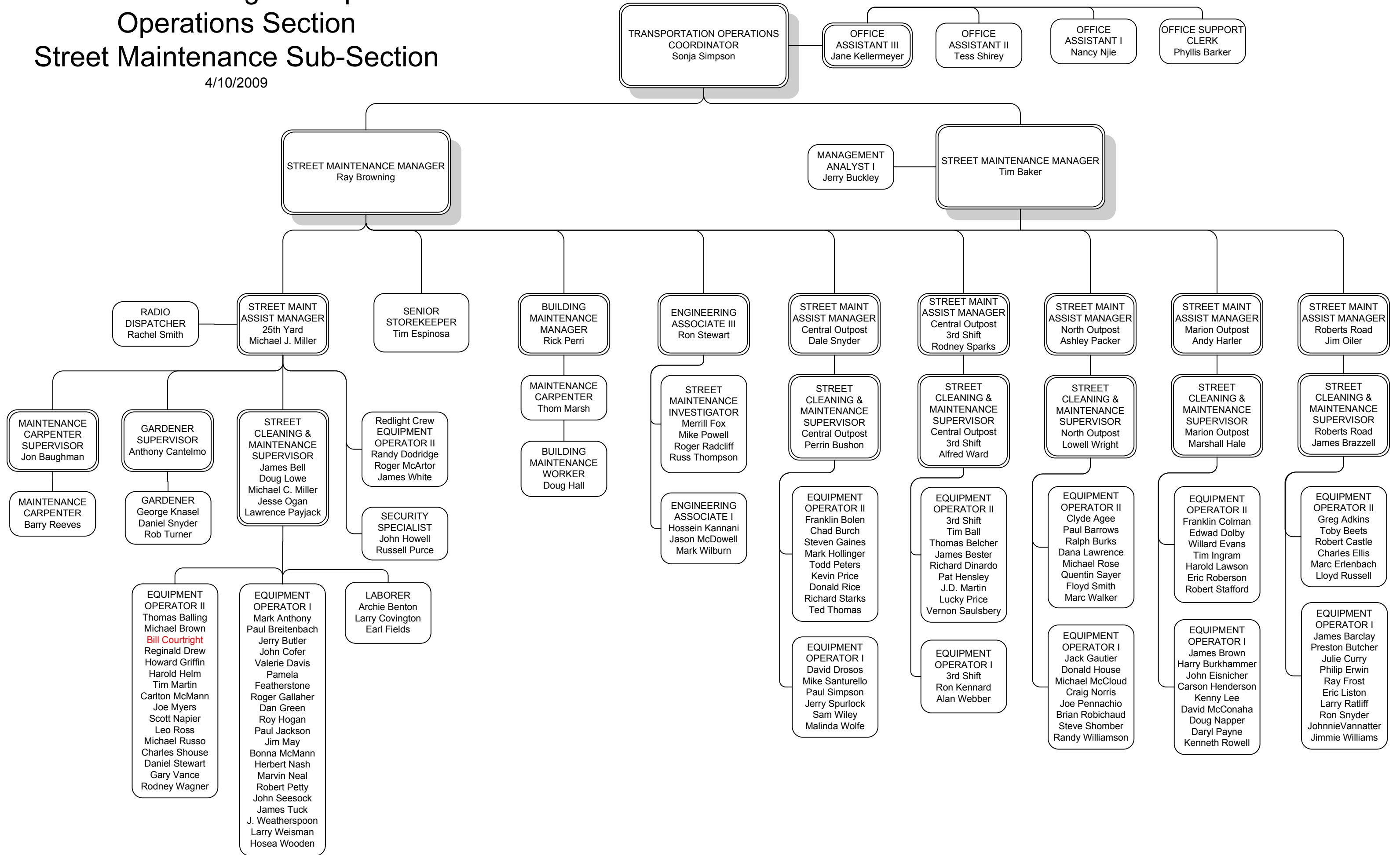
GIS ANALYST
Jozette Calvert

Division of Planning and Operations

Operations Section

Street Maintenance Sub-Section

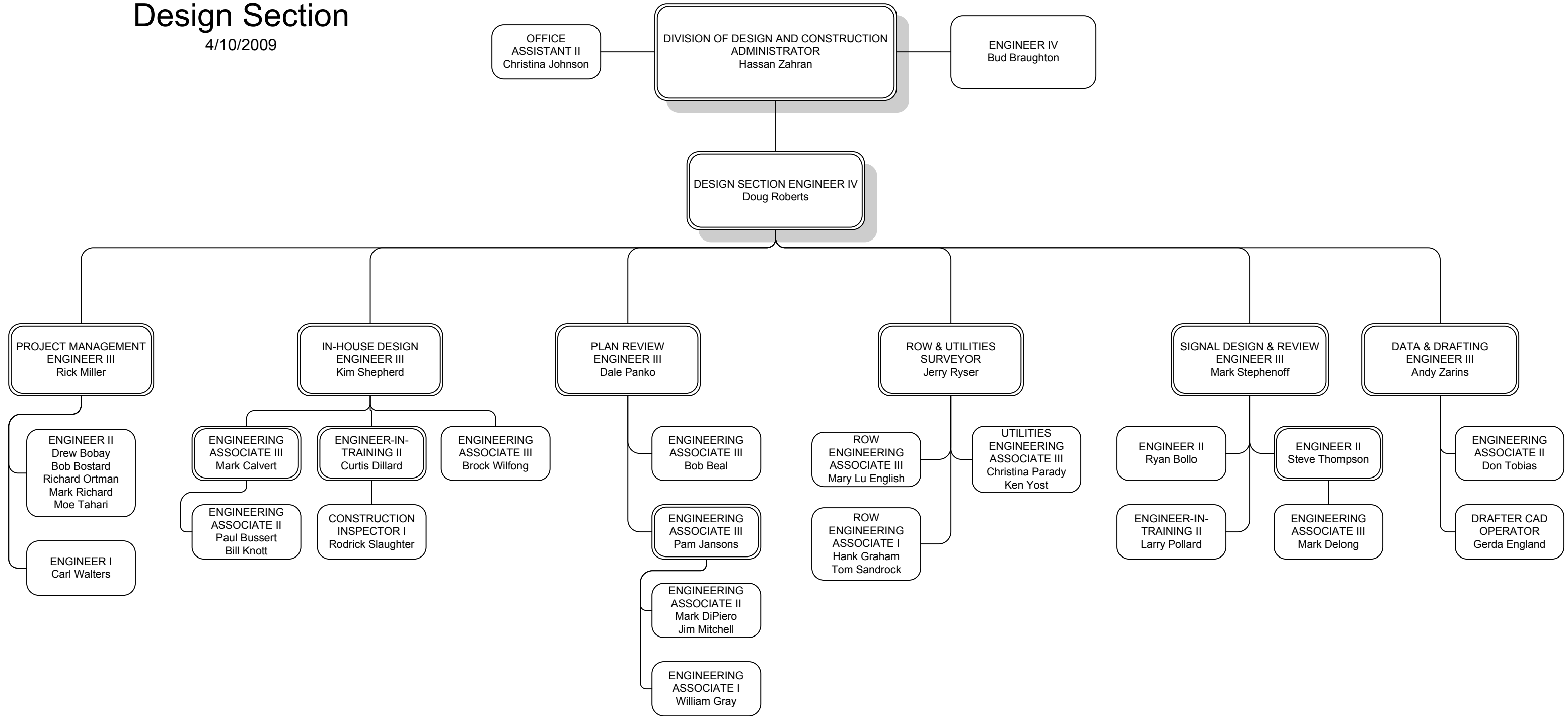
4/10/2009



Division of Design and Construction

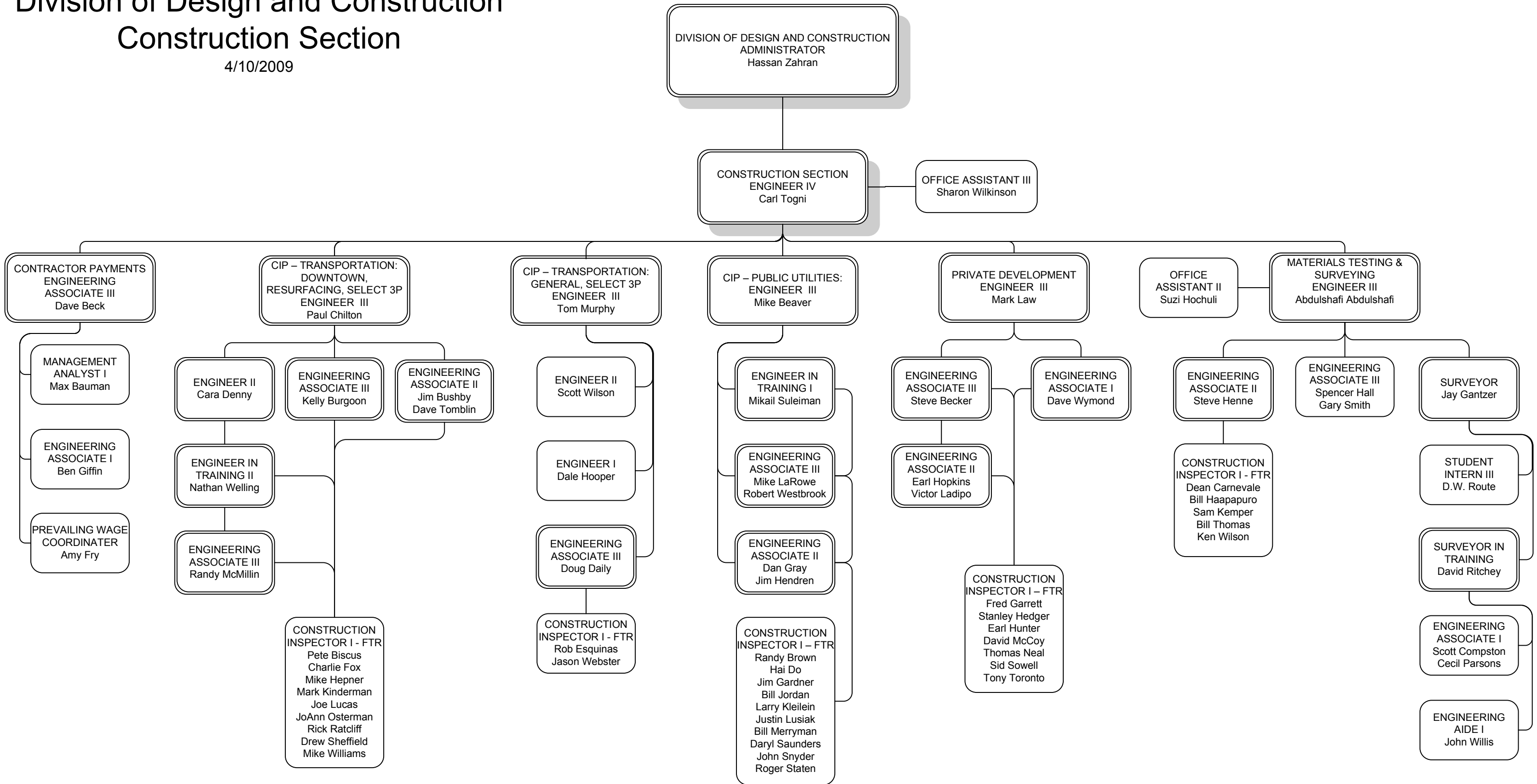
Design Section

4/10/2009



Division of Design and Construction Construction Section

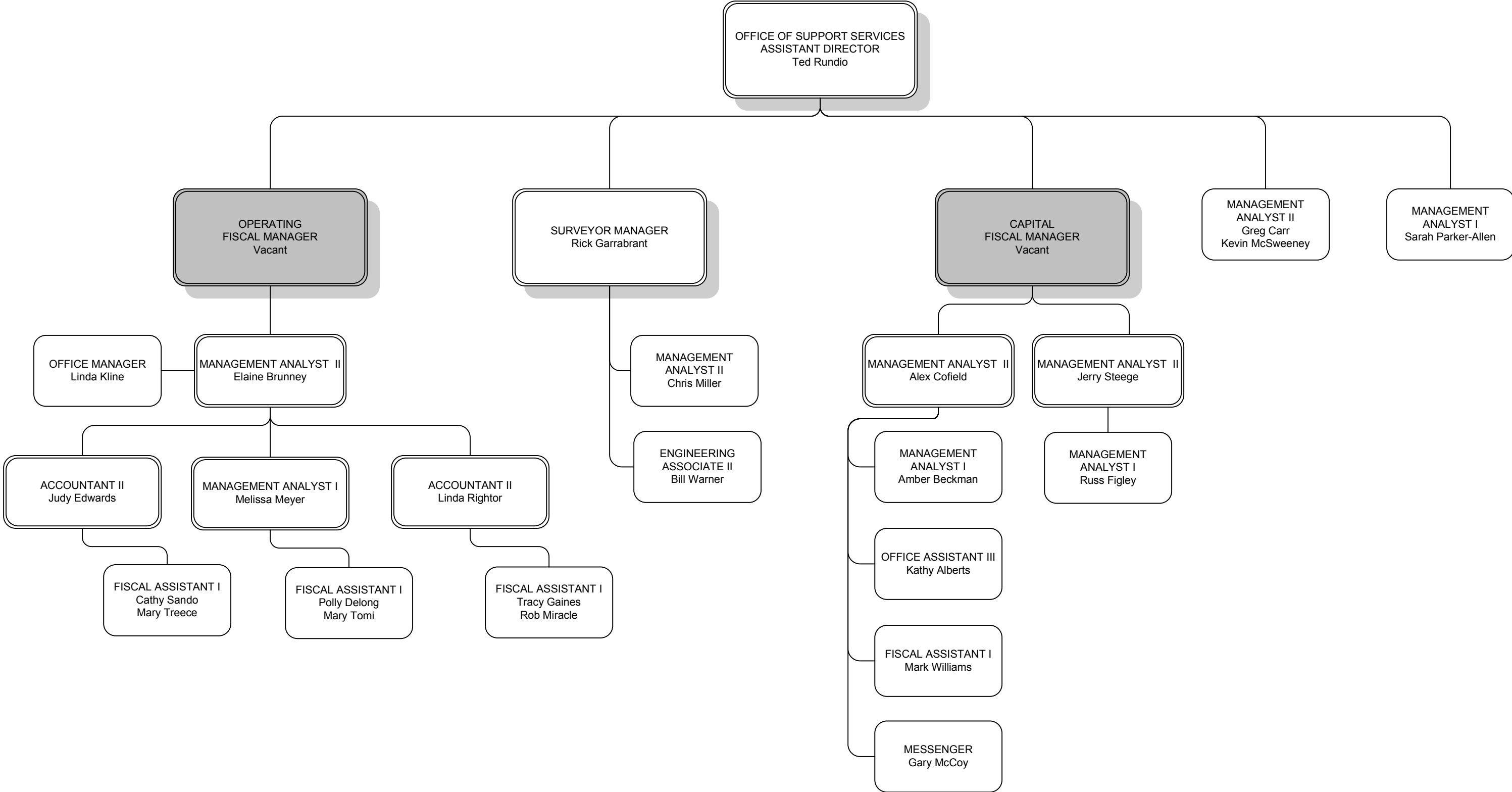
4/10/2009



1. Full Time Limited (FTL) Construction Inspectors are not represented.
2. Construction Section employees are subject to being a shared resource to other sub-sections as dictated by changing workloads.

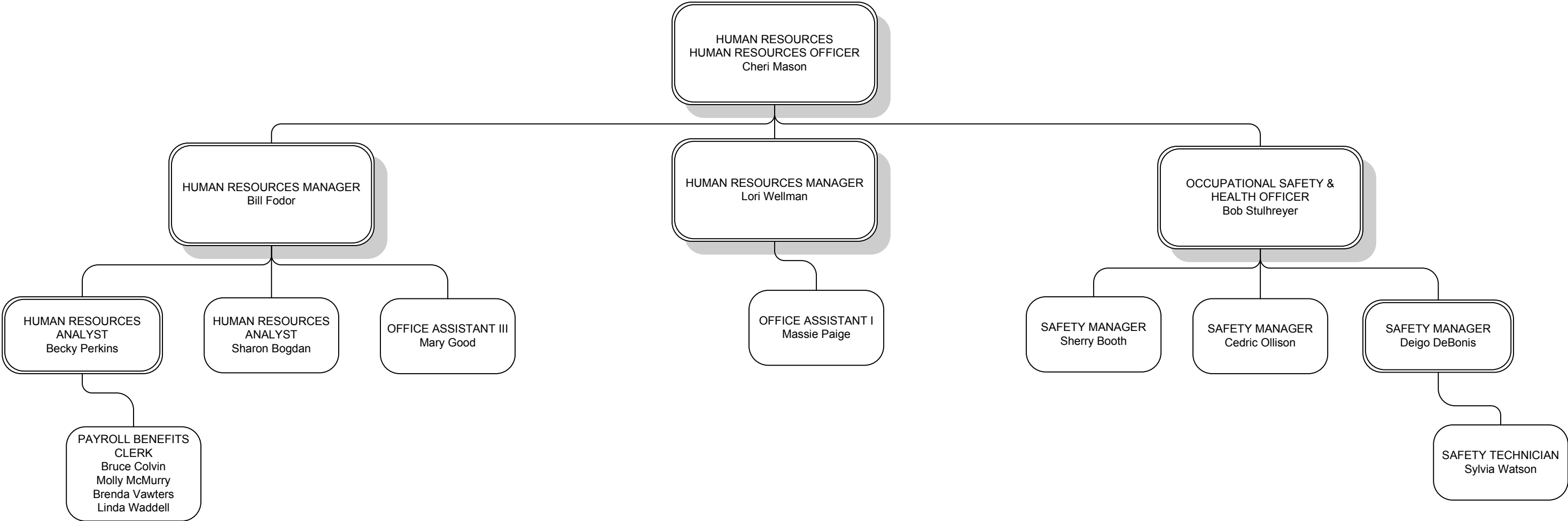
Office of Support Services

4/10/2009



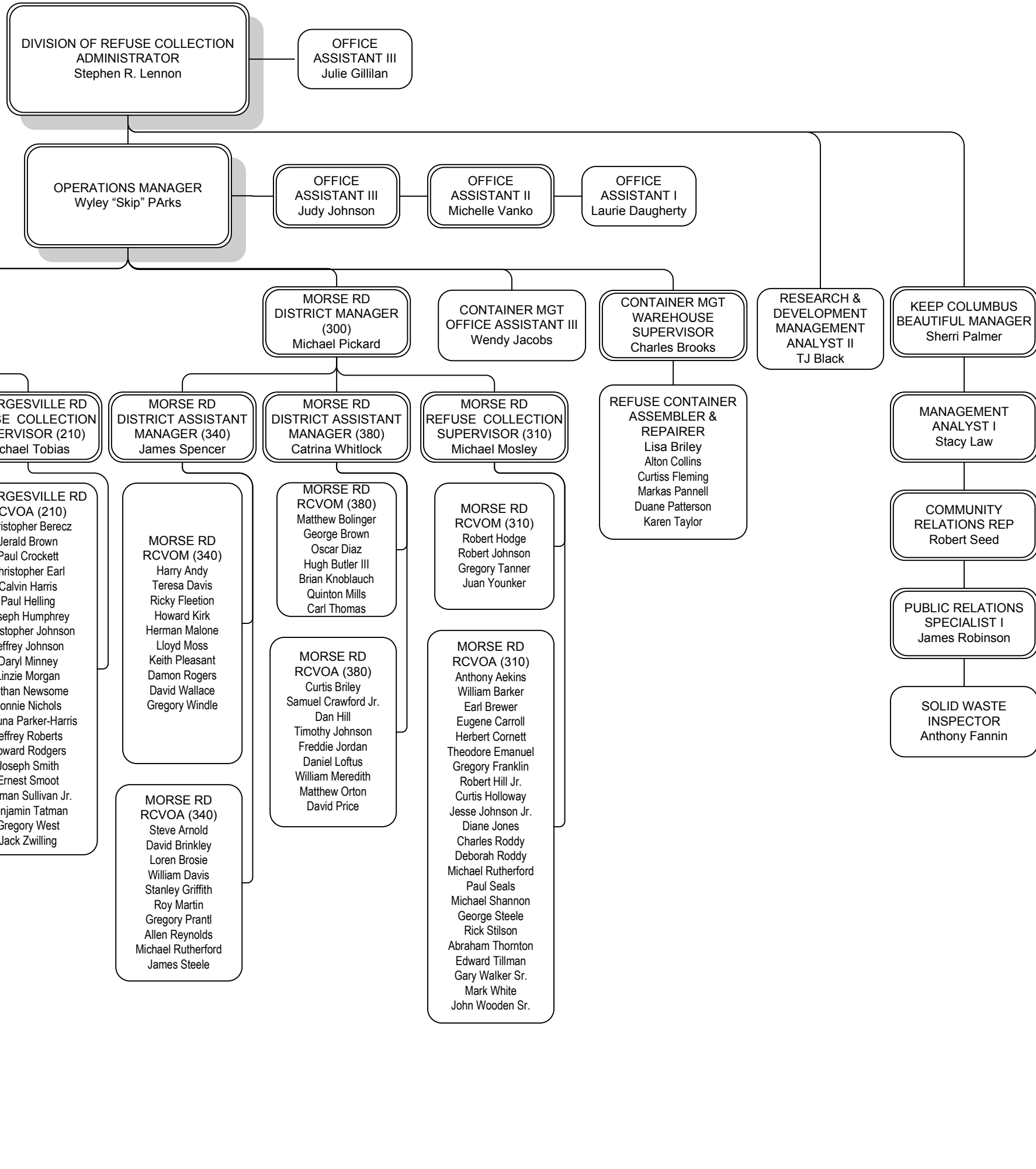
Human Resources

4/10/2009



Division of Refuse Collection

4/10/2009



311 Call Center

4/10/2009

