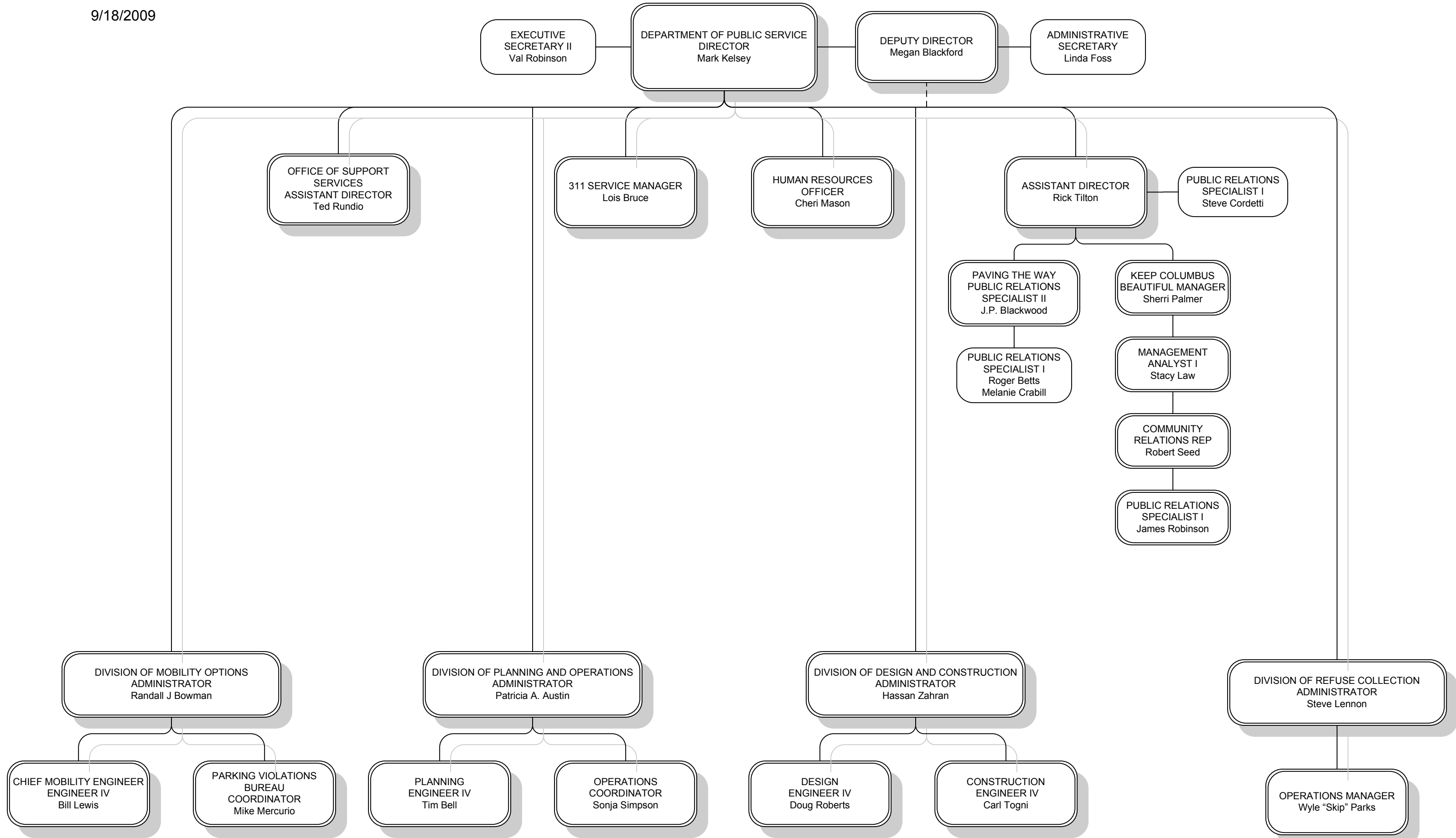


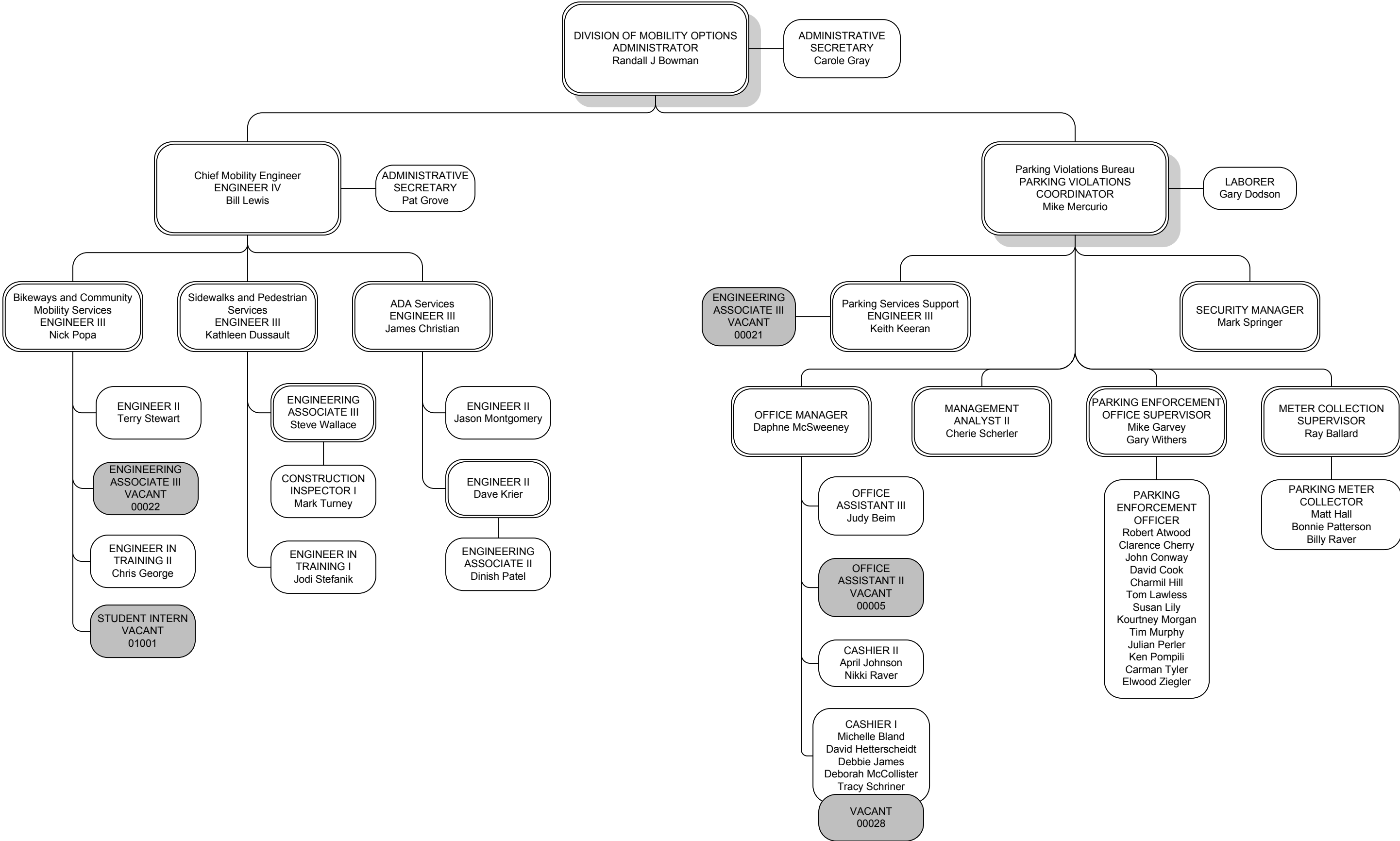
# Department of Public Service

9/18/2009



# Division of Mobility Options

9/18/2009

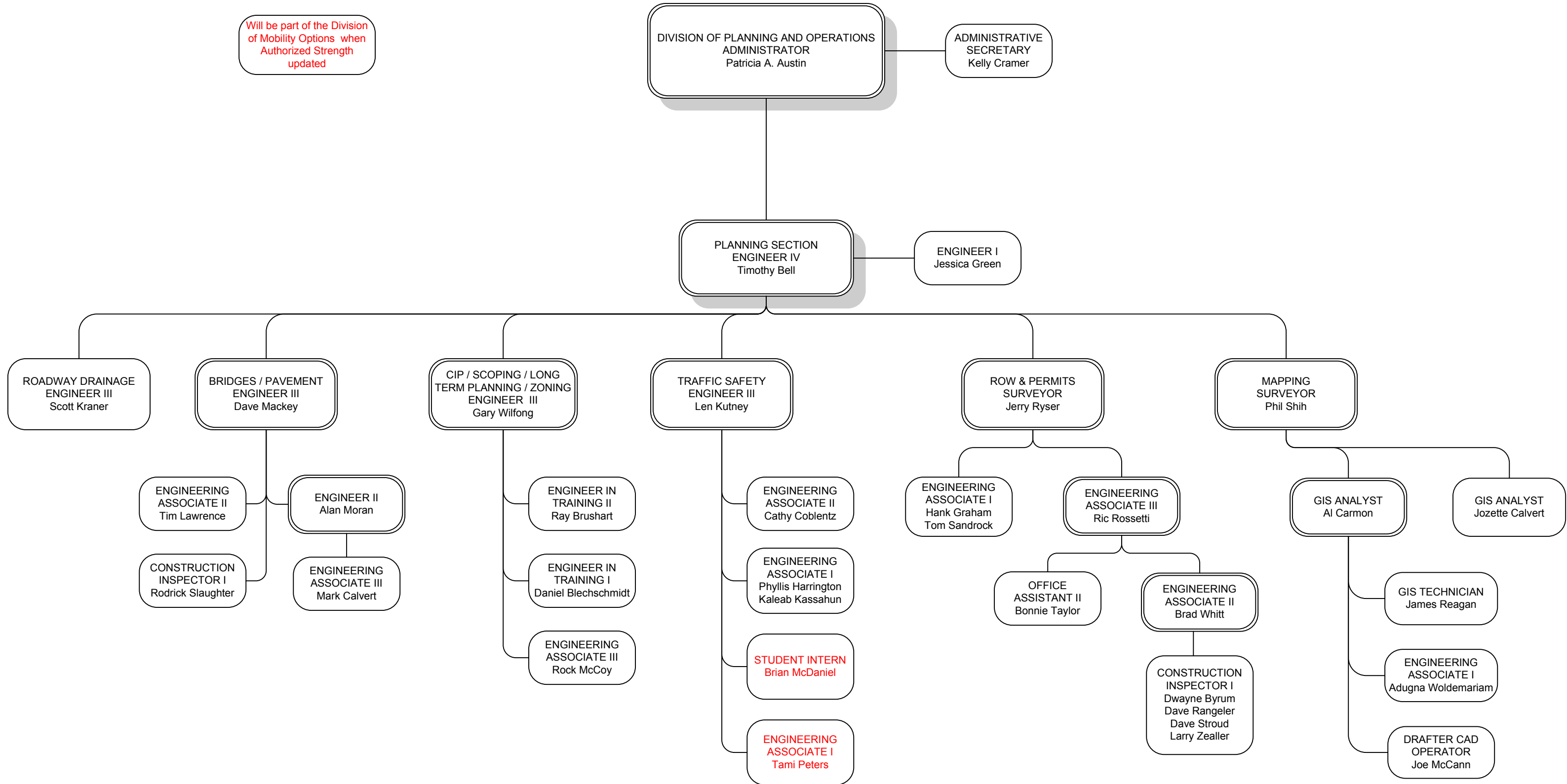


# Division of Planning and Operations

## Planning Section

9/18/2009

Will be part of the Division of Mobility Options when Authorized Strength updated

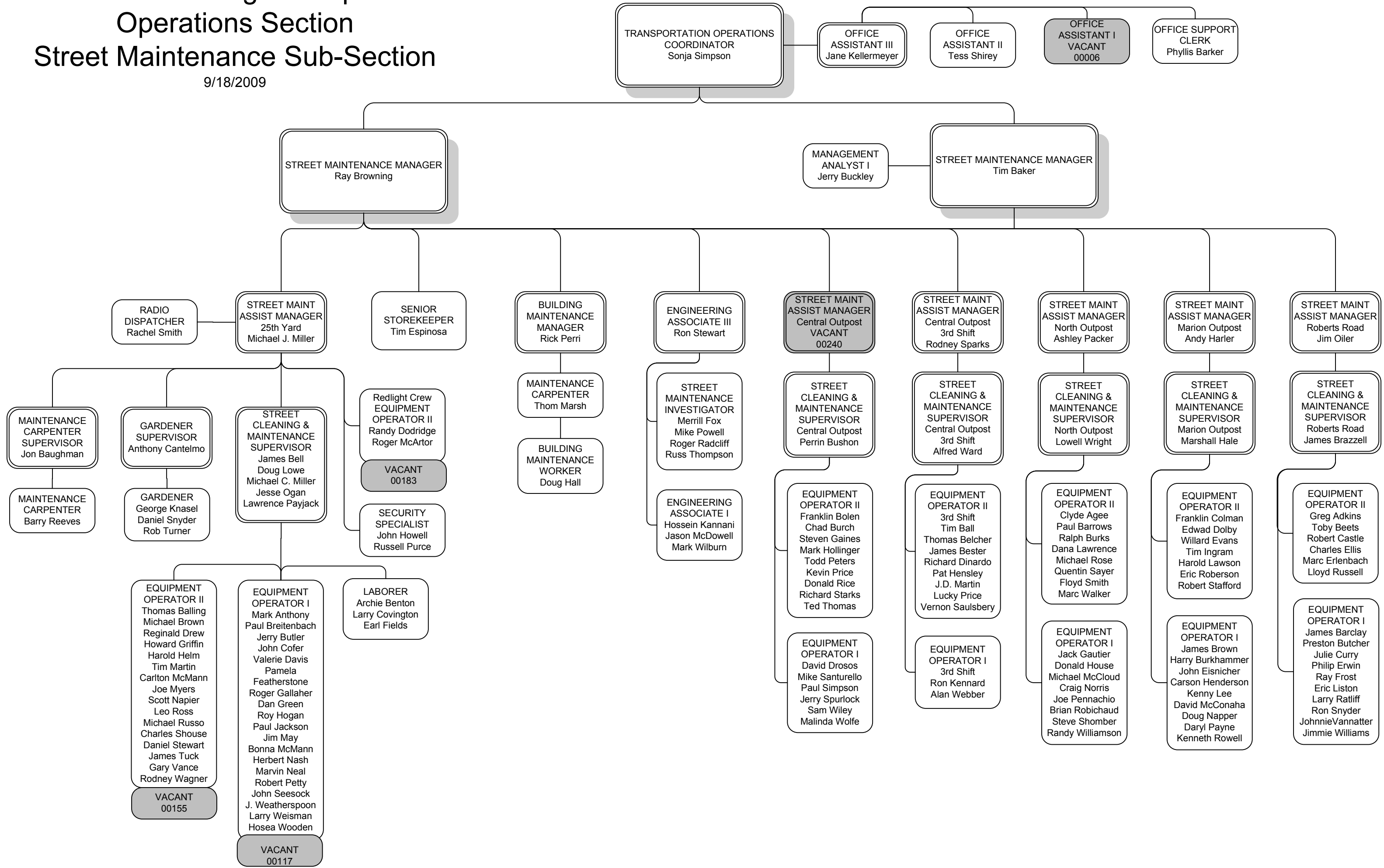


# Division of Planning and Operations

## Operations Section

### Street Maintenance Sub-Section

9/18/2009

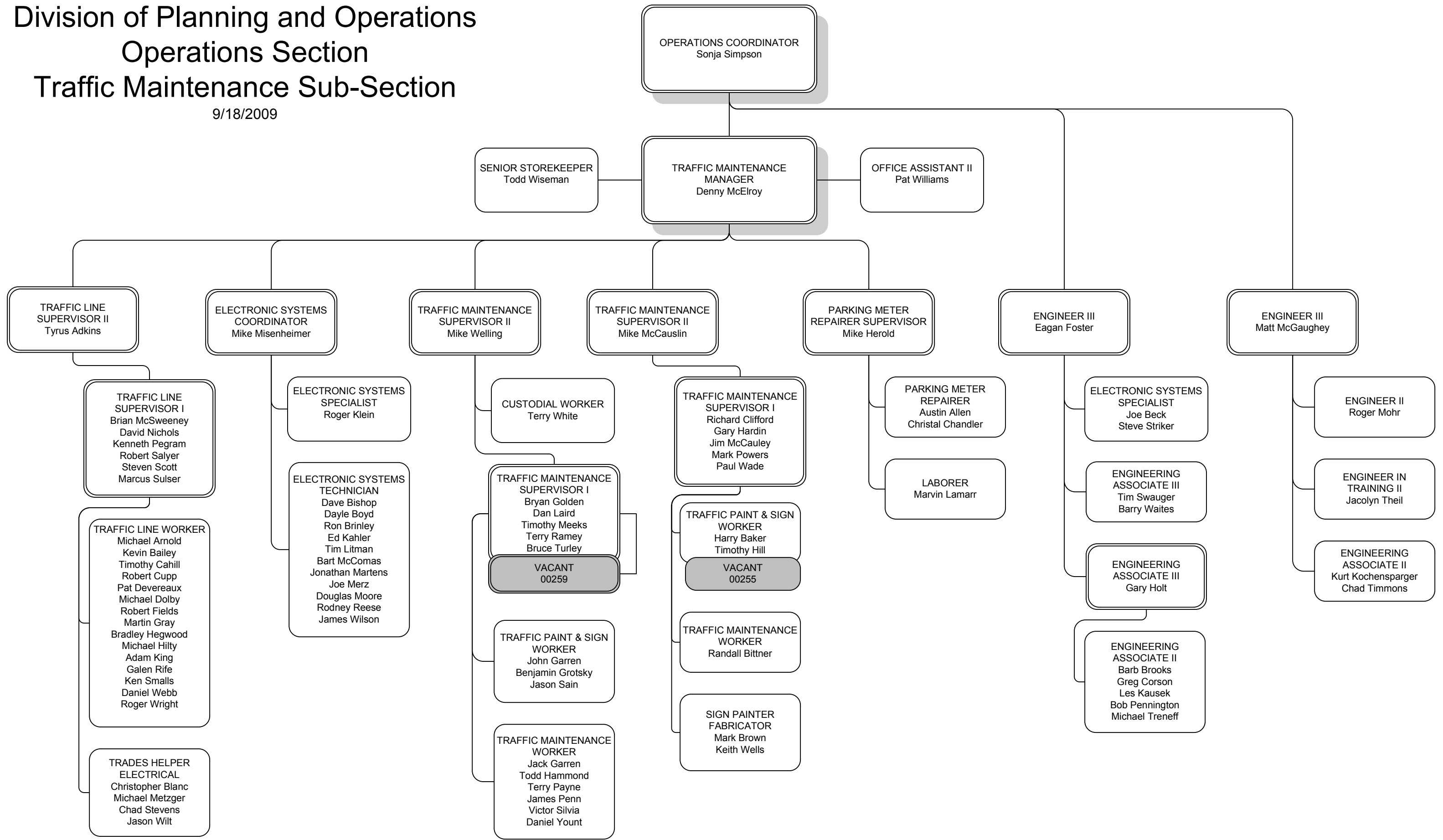


# Division of Planning and Operations

## Operations Section

### Traffic Maintenance Sub-Section

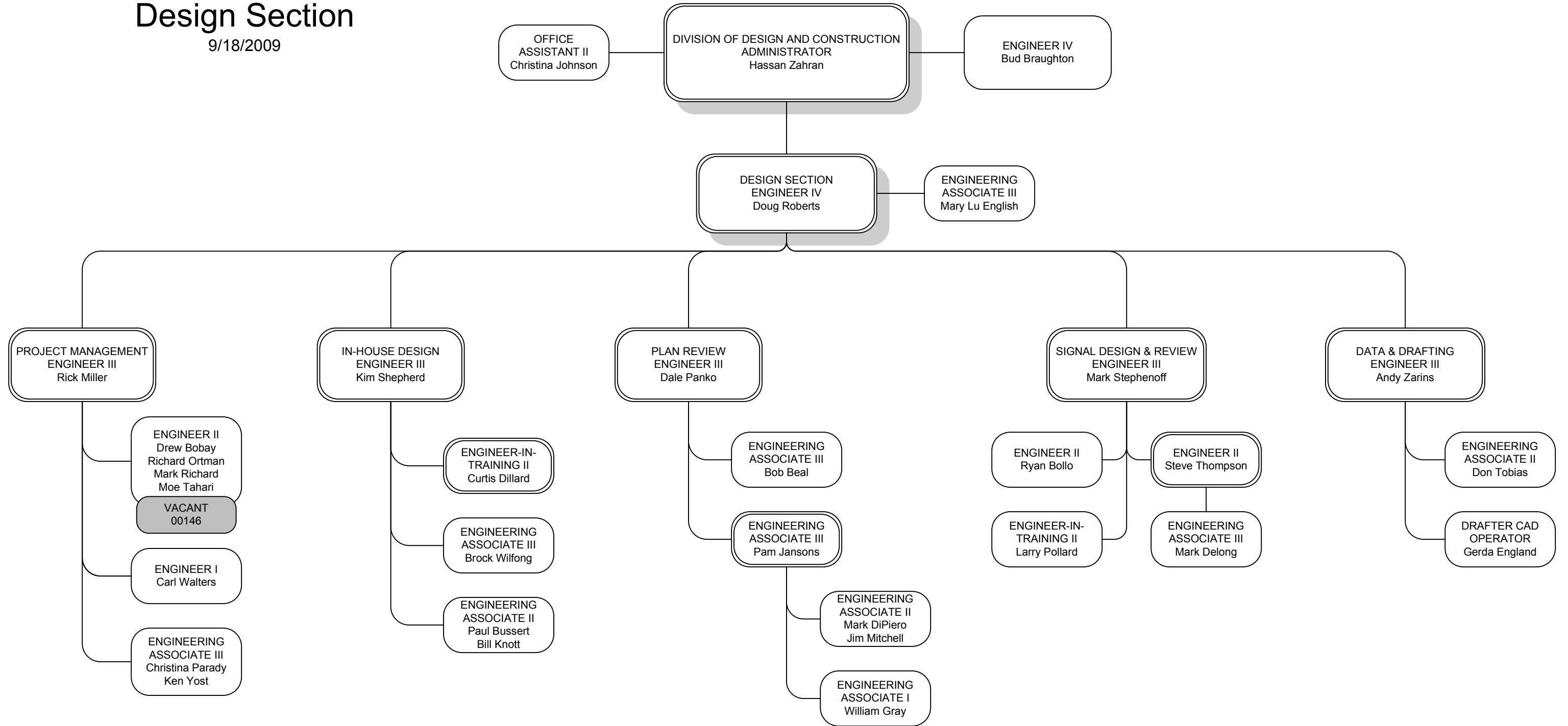
9/18/2009



# Division of Design and Construction

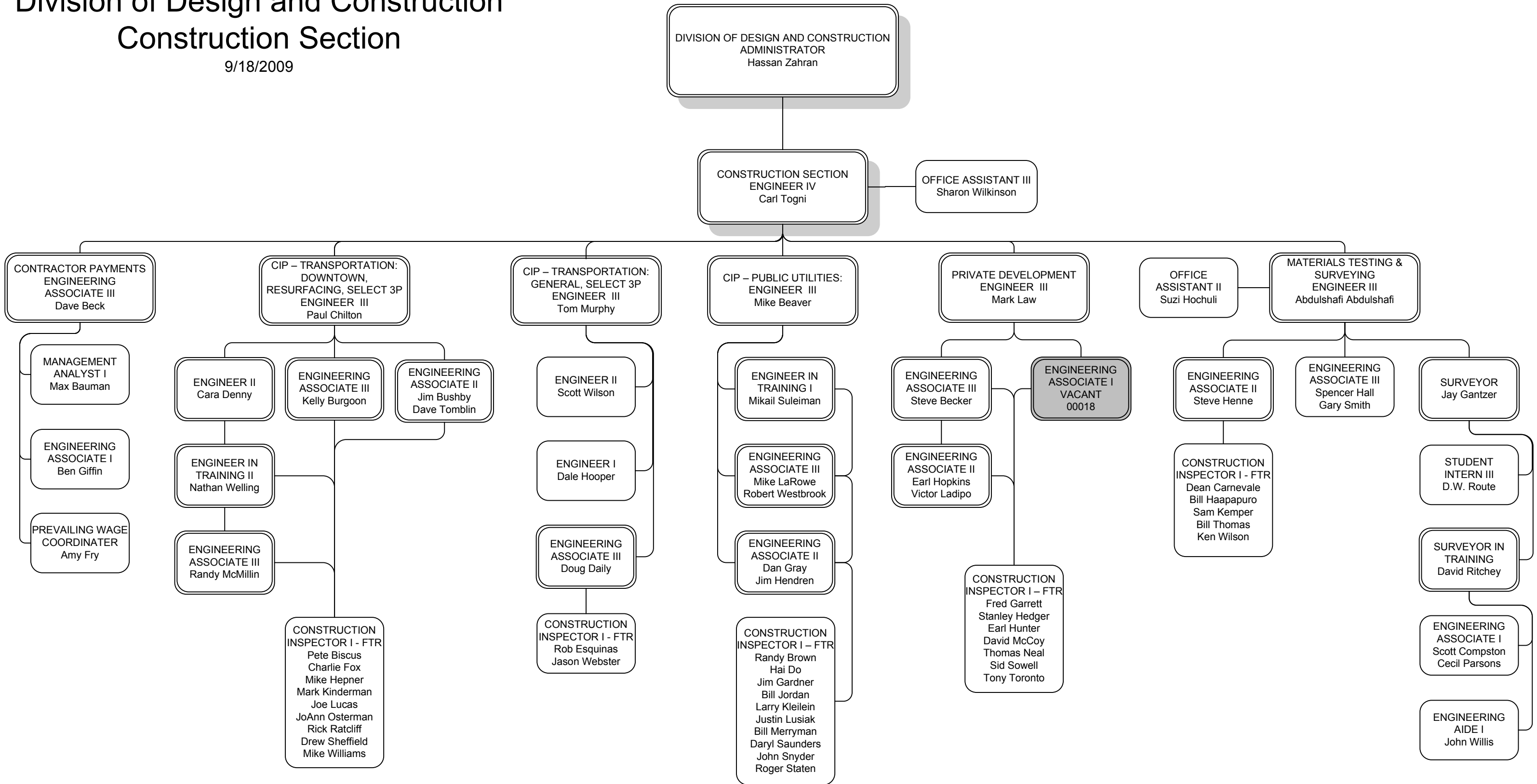
## Design Section

9/18/2009



# Division of Design and Construction Construction Section

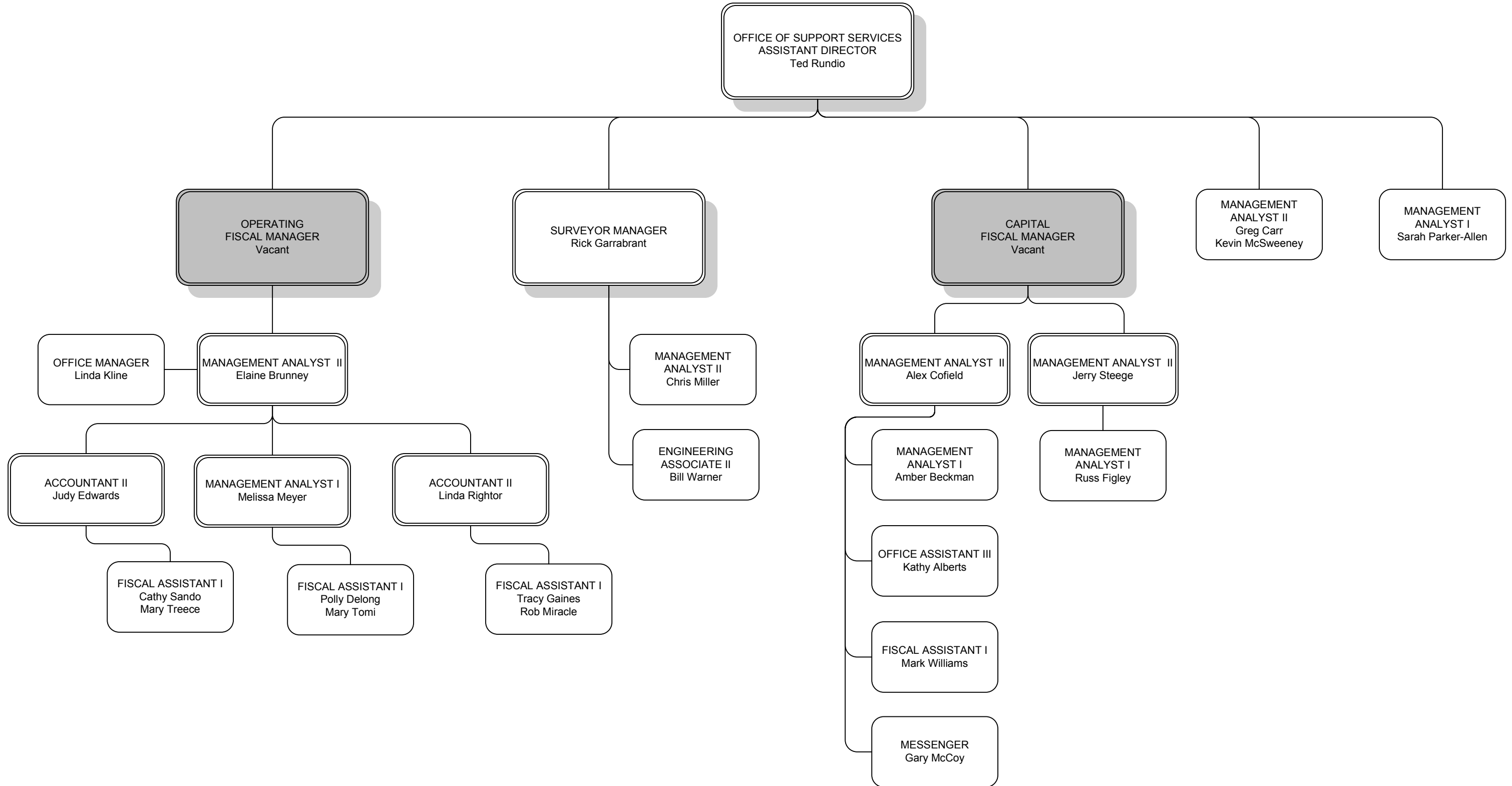
9/18/2009



1. Full Time Limited (FTL) Construction Inspectors are not represented.
2. Construction Section employees are subject to being a shared resource to other sub-sections as dictated by changing workloads.

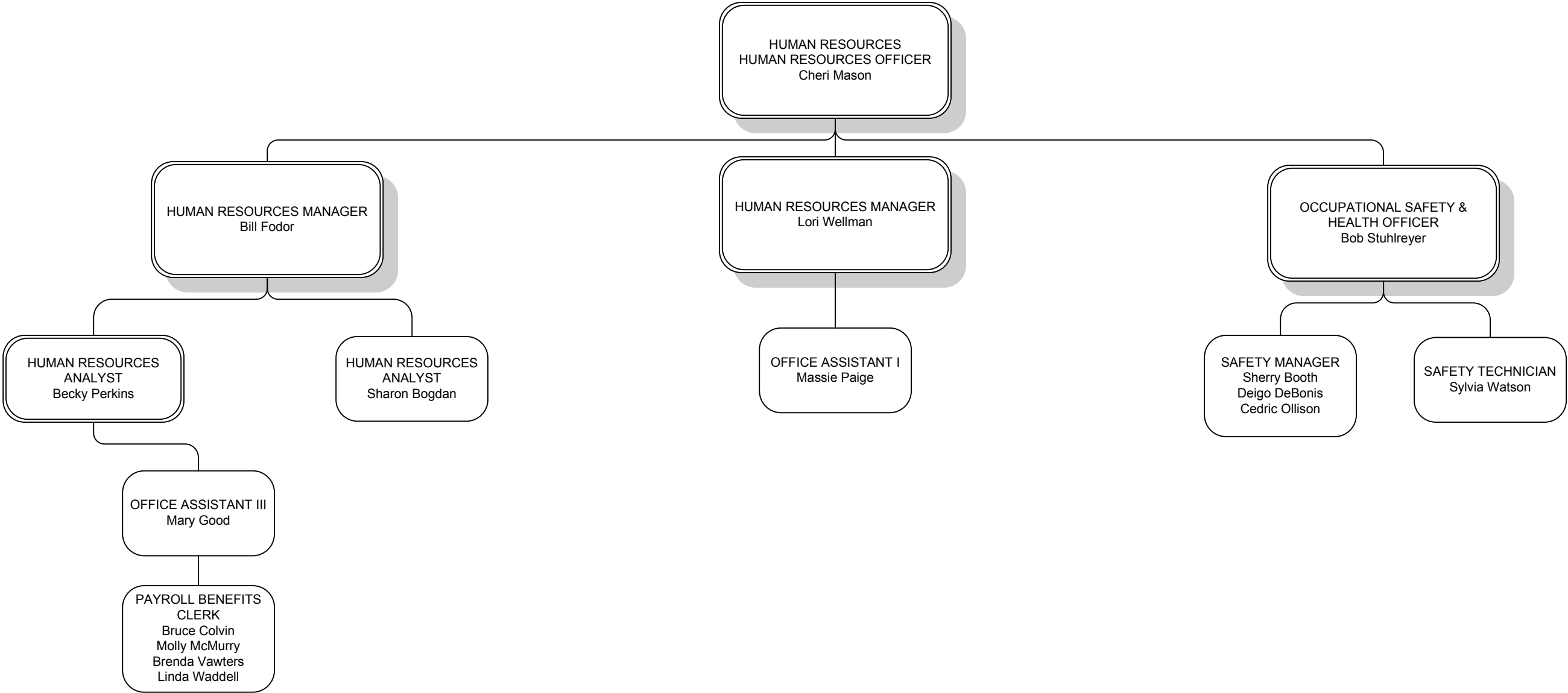
# Office of Support Services

9/18/2009



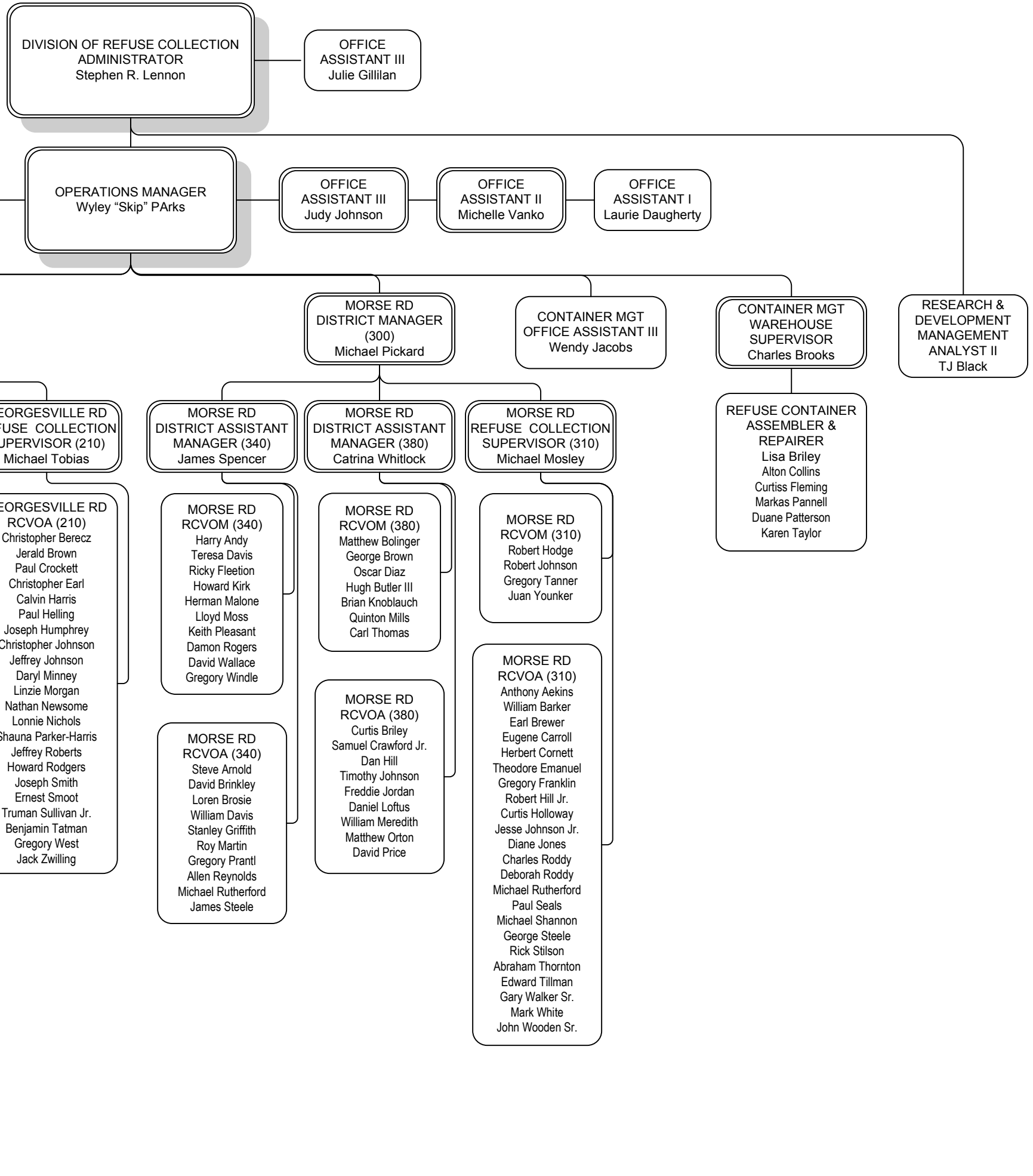
# Human Resources

9/18/2009



# Division of Refuse Collection

9/18/2009



# 311 Call Center

9/18/2009

